

LIBRARY GUIDE



2025-2026

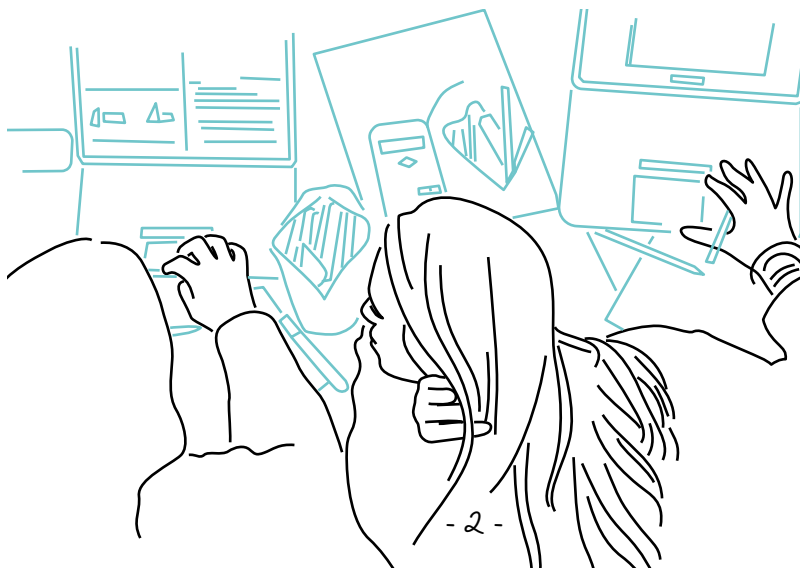
université
de **BORDEAUX**

HELPING YOU SUCCEED

- **Chat live with librarians:** BUTchat at your service
From Monday to Friday, 9 am to 5 pm, via your intranet or the library website.
- **Continuously enriched library collections,** with references available in Babord+ (our online search tool).
- Digital collections available **24/7** through your intranet.
- An effective mastery of information through **training in information searching:** self-directed learning, preparation for a research career, and professional integration.
- Integrated training courses included in curricula, plus **practical workshops** and **individual appointments both on-site and online.**
- Research support covering new topics in scientific and technical information, research visibility, and the development of Open Access.

Borrowing Conditions for Documents

	Number of documents	Duration of loan
Student	unlimited	1 month
PhD student-Teacher-Researcher-Staff	unlimited	2 months
External	15	1 month



AT YOUR SERVICE

*A wide range of opening hours all year round,
adapted to the academic calendar*

- In the evenings until 10 pm, from Monday to Friday
(BU ST + BU SVS + BU DL)
- Full day on Saturdays, from 9 am to 6 pm
(BU ST + BU SVS + BU DL + BU SH + BU Marne)
- Several Sundays throughout the year (9 am to 5 pm), depending on exam periods
(BU ST + BU SVS)

Search and Find!

- × No time to browse the shelves for books?

The Click and Collect service enables you to request and pick up your order at any time.

The smart lockers at Station Marne allow you to pick up your reservations in the city centre.

- × Can't find a document in our collections?

You can request books, theses, and articles to be brought in from other French or foreign libraries through the interlibrary loan service (otherwise known as the «Prêt entre bibliothèques»)

- × No copies available?

You can request a document online that's already checked out. You'll be notified by email and you'll just need to pick it up.

- × Need to renew a document loan?

You can do it from your reader account.

- × Found a document that could enhance our collections?

Suggestions for purchase are welcome.

- × Feeling lost?

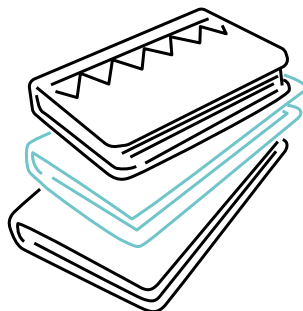
Head to the Help desk: research assistance in the library gives you the keys to navigate.

- × Need to photocopy, print, or scan?

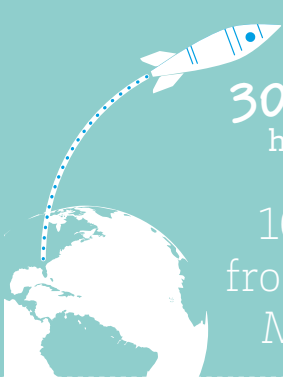
It's possible in all libraries with Izly payment.

- × Interested in on-demand digitization?

It concerns public domain documents. Orders can be placed directly from Babord+.



LIBRARIES ARE ALSO...



30,000 cumulative hours of opening per year, equivalent to 166 round trips from Earth to the Moon for Apollo 11

2,4 million entries per year, equivalent to



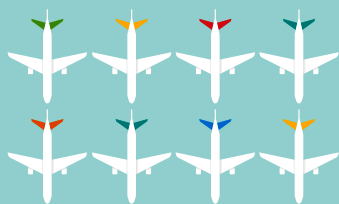
23 km of books and journals in stock, equivalent to half the length of Bordeaux ring road



20,000 square meters available to the public, equivalent



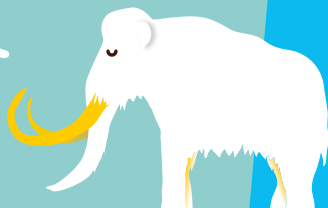
4,000 seats available, equivalent to



Airbus A380s

70 tons of borrowed documents, equivalent to

12



5 centuries of documents, from the discovery of America to the present day



90,000 liters of beverages consumed from vending machines, equivalent to



MY DIGITAL RESOURCES

7 days a week, 24 hours a day, it's the assurance of finding documentation in all disciplines

- > 80 digital platforms
- > 188.000 digital journal titles
- > 240.000 ebooks
- > 13.600 digital thesis

DID YOU KNOW ?

8 libraries offer differentiated workspaces, study rooms, individual booths, which can be booked from your ENT.

→ u-bordeaux.libcal.com

These collections are available via "my research tools":

Babord+

- > **BABORD+**, the library search engine of the universities of Bordeaux and partner institutions
- > **The library website**, where digital resources acquired by the University of Bordeaux are organised by discipline in the section entitled Thematic selection
bibliotheques.u-bordeaux.fr
- > A **selection of tutorials** helps you use various digital resources

- × **Need information, need help?**

BUTchat, where librarians answer your questions, Monday to Friday:

→ u-bordeaux.libanswers.com

(Also accessible from the intranet or the library website)

- × **Your documentary search tool**
→ babordplus.u-bordeaux.fr

- × **Heritage 7 days a week, 24 hours a day**
→ babordNum.fr

- × **Want to learn about literature searches?**

→ doc-formation@u-bordeaux.fr

- × **And to find out everything about your libraries**

→ bibliotheques.u-bordeaux.fr



MY LIBRARIES

Peixotto & Bordes Campus (Talence)

- × Sciences and Techniques University Library (BU ST)
Mathematics and computer science, physical and chemical sciences, life sciences, engineering sciences, history and philosophy of science, and preparation for teacher certification exams

Building B 20 - Allée Baudrimont, Talence

05 40 00 89 89

Monday-Friday: 8:30 am - 10 pm

Saturday: 9 am - 6 pm

Sunday during revision periods:
9 am to 5 pm

- × Mathematics and Computer Science Research Library
Mathematics and computer science

Building A 33 - 351 Cours de la Libération, Talence

05 40 00 61 25

Monday-Thursday: 9 am - 8 pm

Friday: 9 am - 6 pm

DID YOU KNOW?

Closing dates and changes to opening hours during university holidays are displayed in your libraries and communicated on the website.



Montesquieu Campus (Pessac)

- × Law – Letters University Library (BU-DL)

Law and political science, economics, management, sociology, management, mathematics, general culture, foreign languages, language tests, computer science

Monday-Friday: 8:30 am - 10 pm

Saturday: 9 am - 6 pm

- × Legal Libraries

Public Law

05 56 84 25 70

Private Law

05 56 84 85 76

Legal History

05 56 84 29 77

For the 3 legal libraries:

Monday-Thursday: 9 am - 5 pm

Friday: 9 am - 12 pm

Avenue Léon Duguit, Law research building (ground floor and 3rd floor)

Carreire Campus (Bordeaux)

- × Life Sciences and Health University Library (BU SVS)

Biochemistry, biology and microbiology, history and philosophy of science, science and society, medicine, dentistry, paramedical, pharmacy, health

146 Rue Léo Saignat, Bordeaux

05 57 57 14 52

Monday-Friday: 8:30 am - 10 pm

Saturday: 9 am - 6 pm

Sunday during revision periods:
9 am to 5 pm

Victoire Campus (Bordeaux)

- × Humanities University Library (BU SH)

Social anthropology, ethnology, psychology, education sciences, sociology

3 Place de la Victoire, Bordeaux 05 57 57 19 30

Monday-Friday: 8:30 am - 7 pm

Saturday: 9 am - 6 pm

Station Marne

- × Marne University Library

At the heart of the student life hub, a library dedicated to learning and digital resources. A gateway to all printed collections of metropolitan libraries.

16-22 Cours de la Marne, Bordeaux

Monday-Friday: 9 am - 9 pm

Saturday: 9 am - 6 pm

Bastide Campus (Bordeaux)

- × University Pole of Management Sciences Infothèque (PUSG)

Business management, marketing, commercial management, finance, human resources management, accounting, logistics and transportation, law, economics, career guidance and professional integration

35 Avenue Abadie, Bordeaux

05 56 00 96 75

Monday-Tuesday : 8:30 am - 7 pm

Wednesday-Thursday : 8:30 am - 6 pm

Friday : 8:30 am - 4 pm

ISVV

- × Vine and Wine Sciences Institute Library (ISVV)

Oenology, viticulture, agri-food and nutrition, biochemistry, biology and microbiology, chemistry, law, economics, history and geography of wine, environment, sustainable development, marketing, commercial management

210 Chemin de Leysotte, Villenave d'Ornon

05 57 57 58 20

Monday-Friday: 9 am - 6 pm

IUT de Bordeaux

- × IUT of University of Bordeaux Library

Engineering sciences, environment, sustainable development, business management, history and philosophy of science, science and society, languages, leisure, career guidance and professional integration

15 Rue Naudet, Gradignan

05 56 84 79 69

Monday-Friday: 8:30 am - 6 pm

DID YOU KNOW?

Digital documentation entails several millions of digital documents viewed and/or downloaded each year.

STAPS

- × Sciences and Techniques of Physical and Sports Activities Library (STAPS)

Educational and sports physical activities, health, education sciences, sociology, psychology, history, sports law and economics, marketing and commercial management, leisure

12 Avenue Camille Jullian, Pessac
05 56 84 52 07

Monday-Friday: 8:30 am - 6 pm

Agen Campus

- × Michel Serres campus University Library

Education sciences, didactics and pedagogy, agri-food and nutrition, organization and management of companies, hard sciences, humanities and social sciences, children's literature, preparation books for the primary school teacher certification exams, leisure

Avenue Michel Serres, Agen
05 53 48 06 68

Monday-Friday: 8:30 am - 6 pm

- × Law-Languages Library

Law, economics, languages, literature and civilization of English-speaking and Spanish-speaking countries, orientation

2 Quai de Dunkerque, Agen
05 53 77 57 05

Monday-Thursday: 9 am - 6 pm
Friday: 9 am - 4 pm

Périgord Campus

- × Périgord campus University Library

Law, economics, management of health and social structures, legislation, jurisprudence, doctrine, social sciences, sociology, nursing, children's literature, preparation books for the primary school teacher certification, leisure

Rond-point Suzanne Noël, Périgueux
05 53 02 60 91

Monday-Tuesday : 8:30 am - 6 pm

Wednesday-Thursday : 8:30 am - 7 pm

Friday : 8:30 am - 4 pm

Dax

- × Institute of Thermalism Library

Health waters, thermalism, management of wellbeing establishments and nutrition, paramedical disciplines

8 Rue Sainte Ursule, Dax
05 58 56 89 95

Monday-Thursday: 9 am - 7 pm

Friday: 9 am - 5 pm



BABORDNUM/ HERITAGE

The Law – Letters library preserves heritage documents.

Ancient, rare, or precious, sometimes all three at the same time, they are worth a visit.

These documents can be consulted on-site or online at

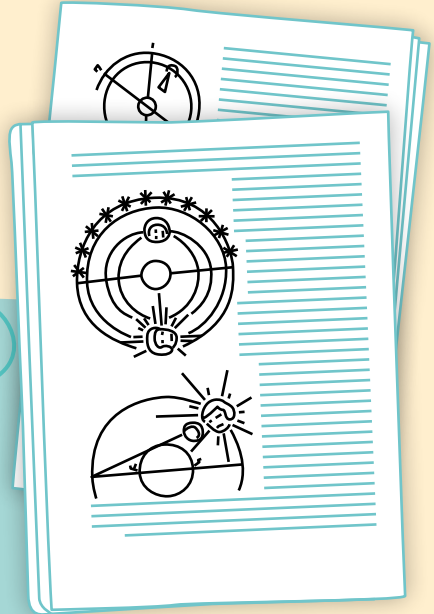
→ www.babordnum.fr.

Treatise on the Sphere, Sacro-Bosco 1480

This incunable is the first book on astronomy to have been printed.

Christopher Columbus used this information to prepare for his crossing of the Atlantic.

Available for consultation at the Law – Letters library



DOCUMENTATION DIRECTORATE

Building C4 3rd floor

16 avenue Léon Duguit - CS 50057 - 33608 Pessac CEDEX

05 56 84 85 26

Cover and central pages illustrations: *Abwu*

Abwu is a visual artist whose work explores local culture, self-discovery, and everyday poetry. Through illustration and design, she seeks to connect with communities and create visual narratives that are both thoughtful and inviting. find_a_place

Other illustrations: *Jacques Machemy*.



